

# **InterActive SyslogViewer**

© 2018 Adiscon GmbH

# Table of Contents

<b>Part I About InterActive SyslogViewer</b>	<b>1</b>
1 Features .....	1
2 Requirements .....	1
<b>Part II Options &amp; Configuration</b>	<b>1</b>
1 Launching InterActive SyslogViewer .....	2
2 Using InterActive SyslogViewer .....	2
3 Options & Menus .....	2
File Menu .....	2
Options .....	3
General Options .....	3
Notifications & Questions.....	5
License .....	6
Edit Menu .....	7
View Menu .....	9
Help Menu .....	10
4 Live Syslog View .....	11
5 Database View .....	12
<b>Index</b>	<b>0</b>

# 1 About InterActive SyslogViewer

**InterActive SyslogViewer** is a tool that let's you review your syslog data very easy. It is a separate syslog server, that simply displays all incoming data. By this you can see directly what is happening.

## 1.1 Features

### Fast and Easy syslog Viewing

The SyslogViewer allows you to directly view and review syslog messages. Therefore you can react much better on occuring problems or check if everything is ok.

### Review stored logs from a database

You can as well directly review log entries in a database. Simply enter the login details and thats it. You can then review your logs and even filter the view. That helps you to find the important data in an easy way.

### Export selected data

You can export selected data for further manual processing, like sending an email to your colleague for informing them about what is happening.

## 1.2 Requirements

Any Windows-Windows based operating system like Windows XP, Vista, 7, 8, 10, 2003, 2008, 2012, 2016.

You need at least .NET 2.0 framework installed in order to run Adiscon's Syslog Viewer.

Hardware requirements:

- 32MB RAM

# 2 Options & Configuration

InterActive SyslogViewer is an add-on to the MonitorWare Agent and WinSyslog.

**Please note that it is a utility program, with a primary focus on real-time troubleshooting.**

InterActive SyslogViewer is **not** meant to continously monitor a system. This is what the service is designed for. While Interactive SyslogViewer allows to view current syslog traffic, the service should be used for all other purposes, like creating log files.

## 2.1 Launching InterActive SyslogViewer

To run the InterActive SyslogViewer, click the "SyslogViewer" icon present in the Programs Folder -> MonitorWare Agent/WinSyslog located in the Start menu.

It can also be launched from the command prompt:

- Open a Command Prompt window
- Change to the drive and directory where the MonitorWare Agent is installed.
- Type "InteractiveSyslogViewer.exe" and hit enter.

Available Command Line parameters are:

```
/?          = Show Options  
/autolisten = Start Syslog Server automatically  
/port=10514 = Overwrites the configured port  
/windowpos 0,0,512,800 = Sets default window positions
```

## 2.2 Using InterActive SyslogViewer

InterActive SyslogViewer is an add-on to the MonitorWare Agent and WinSyslog.

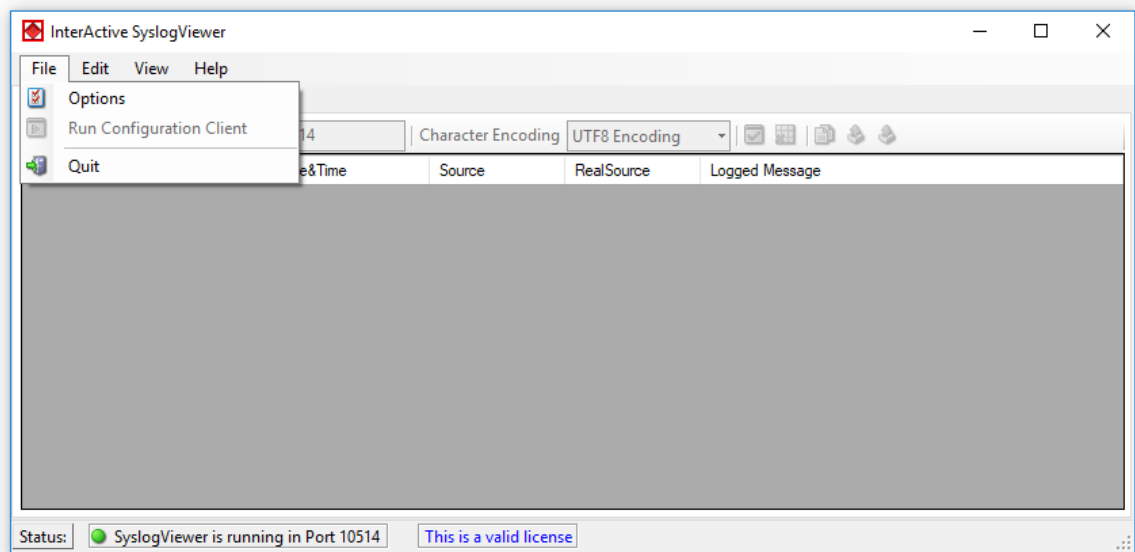
**Please note that it is a utility program with a primary focus on real-time troubleshooting.**

Interactive Syslog Server is **not** meant to continuously monitor a system. This is what the service is designed for. While Interactive Server allows to view current Syslog traffic, the service should be used for all other purposes, like creating log files.

## 2.3 Options & Menus

Please find more information about the different menus and options in the respective sub-category.

### 2.3.1 File Menu



*File Menu*

## Options

This will open the Options dialog. Please see the sub-chapters for more details on this.

## Run Configuration Client

This option will open the configuration client of MonitorWare Agent/WinSyslog. Here you can do detail configuration of the service.

## Minimize to tray

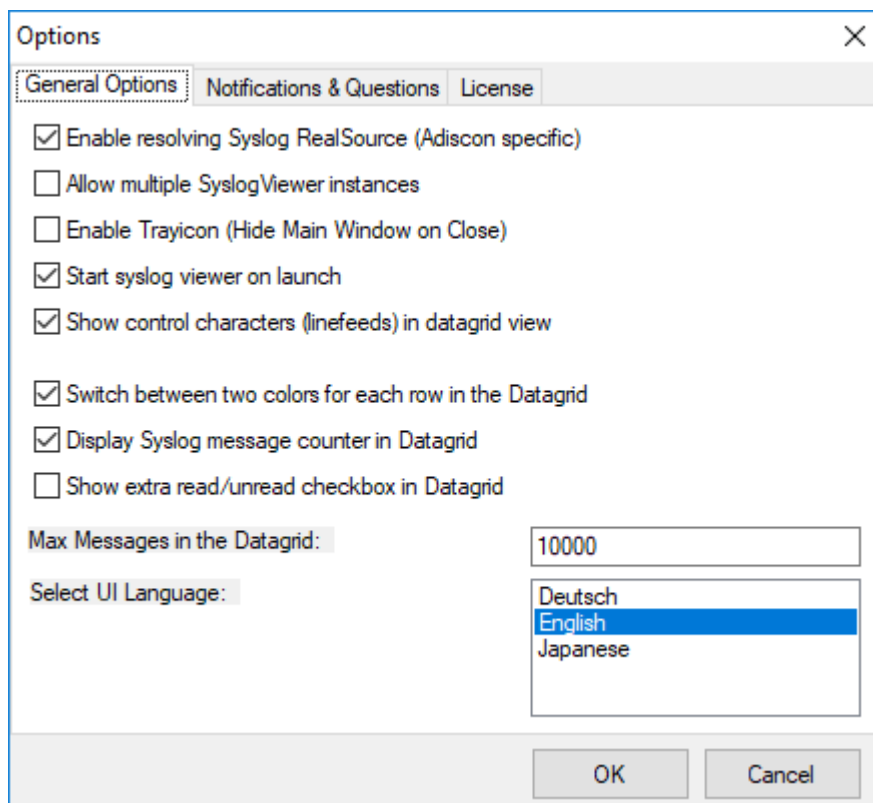
This will minimize the InterACTIVE SyslogViewer window and remove it from the taskbar. You can open it again by double-clicking on the icon in the system tray.

## Quit

By clicking here, InterACTIVE SyslogViewer stops receiving data and it will close the application.

### 2.3.1.1 Options

#### 2.3.1.1.1 General Options



*General Options Tab*

**Enable Resolving Syslog RealSource (Adiscon specific)**

With this option enabled, you can see the real source in multiply forwarded messages. That means, you can see the system that forwarded the message and the system where the message originates from.

**Allow multiple SyslogViewer instances**

You can have multiple instances of the InterActive SyslogViewer by activating this option. This allows you to have multiple forwarding servers sending on different ports and receive their messages separately.

**Enable Trayicon (Hide Main Windows on Close)**

Enable this to have a tray icon. This enables a soft-close. InterActive SyslogViewer will stay active, but the window will be completely hidden except the tray icon. By double-clicking on the icon, the window will show again.

**Start syslog viewer on launch**

Enable this to start the syslog server directly when starting InterActive SyslogViewer.

**Show control characters (linefeeds) in datagrid view**

When enabled, you will see control characters like linefeeds in the datagrid as well.

---

**Switch between two colors for each row in the Datagrid**

To have a better overview over the syslog data, activate this option.

**Display Syslog message counter in the Datagrid**

You can enable a counter by checking the box here. It will count further, even if the maximum of messages is already exceeded.

**Show extra read/unread checkbox in Datagrid**

If enabled, an additional checkbox is added for each record in the datagrid that can be marked as checked.

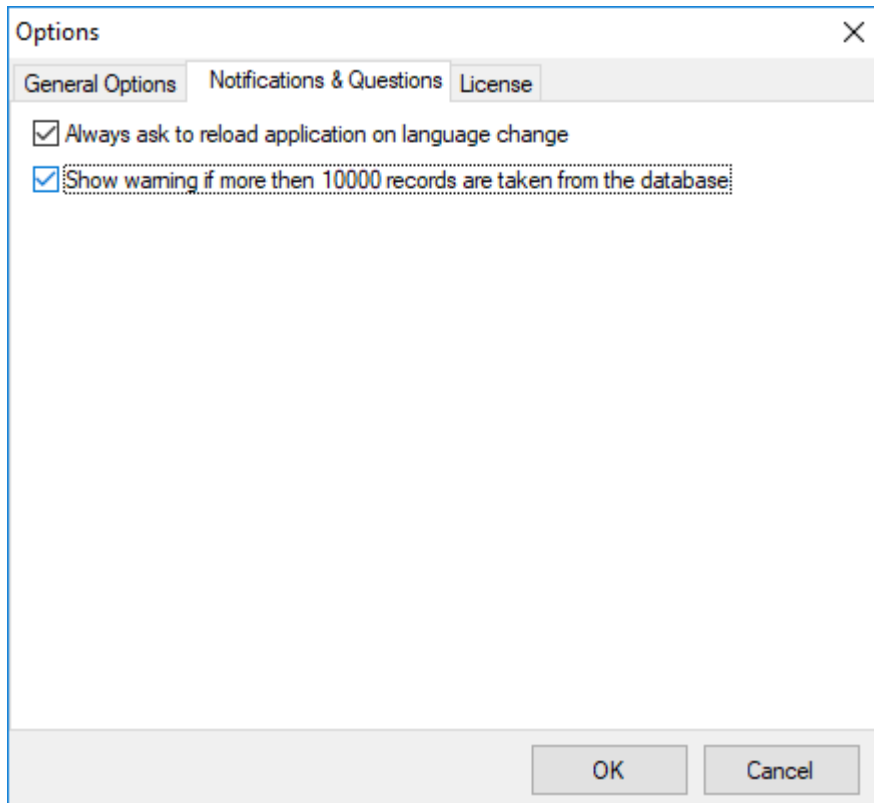
**Max Messages in the Datagrid**

Here you can adjust the maximum messages that will be available in the datagrid. By increasing this value, you can store more messages for direct review. **Please note, that increasing the maximum number of messages will have a severe impact on your memory.**

## Select UI Language

Here you can choose your favorite language for the InterActive SyslogViewer. By default it is english. You can choose german or japanese as well.

### 2.3.1.1.2 Notifications & Questions



*Notifications & Questions Tab*

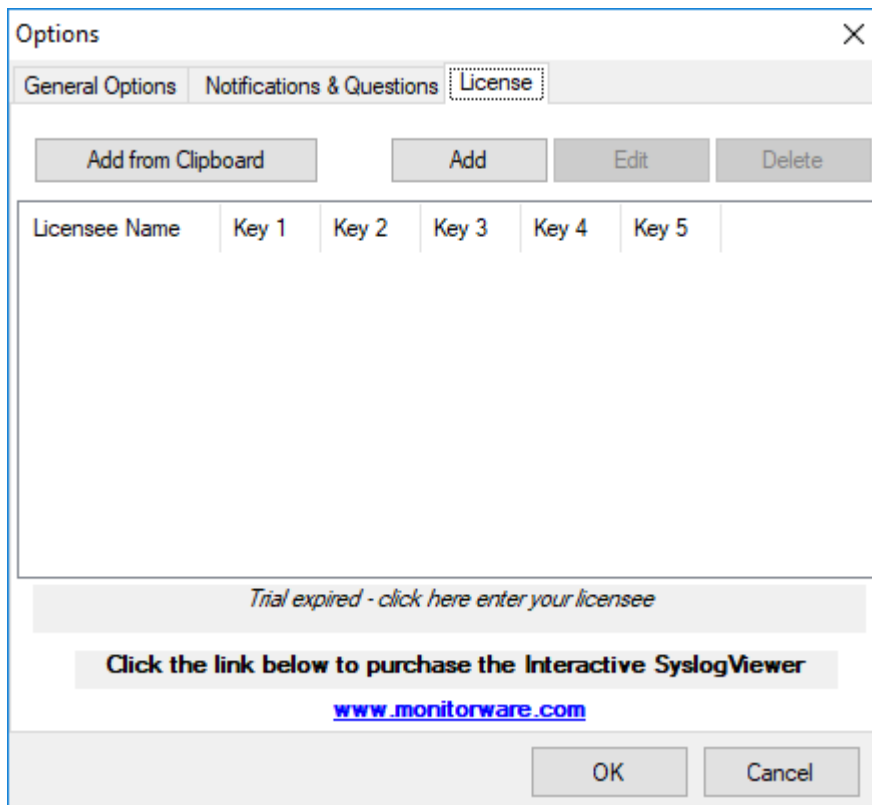
### **Always ask to reload application on language change**

While the box is checked, InterActive SyslogViewer will ask to reload the application on a language change. This is, because the language file can only be loaded while starting the application and not while it is running.

### **Show warning if more than 10000 records are taken from the database**

By activating this option, you will be warned, if the records in the database are just too much. This is to prevent the machine from receiving too much load. Polling lots of messages from a database can have a severe impact on the performance of the machine.

## 2.3.1.1.3 License



License Tab

Here you can insert the license. You have several options:

#### **Add from Clipboard**

This will insert the license you have currently on your clipboard.

#### **Add**

This button is to manually add a license manually. A new window will open, which shows you the form for entering the license information. This consists of a license name and five blocks of numbers.

#### **Edit**

Once a license is entered, it can be changed afterwards. This is done with this button. Mark the license you want to edit and click the button. A window will open which looks just like when adding a license, but the marked license details are inserted already. You can edit every field separately.

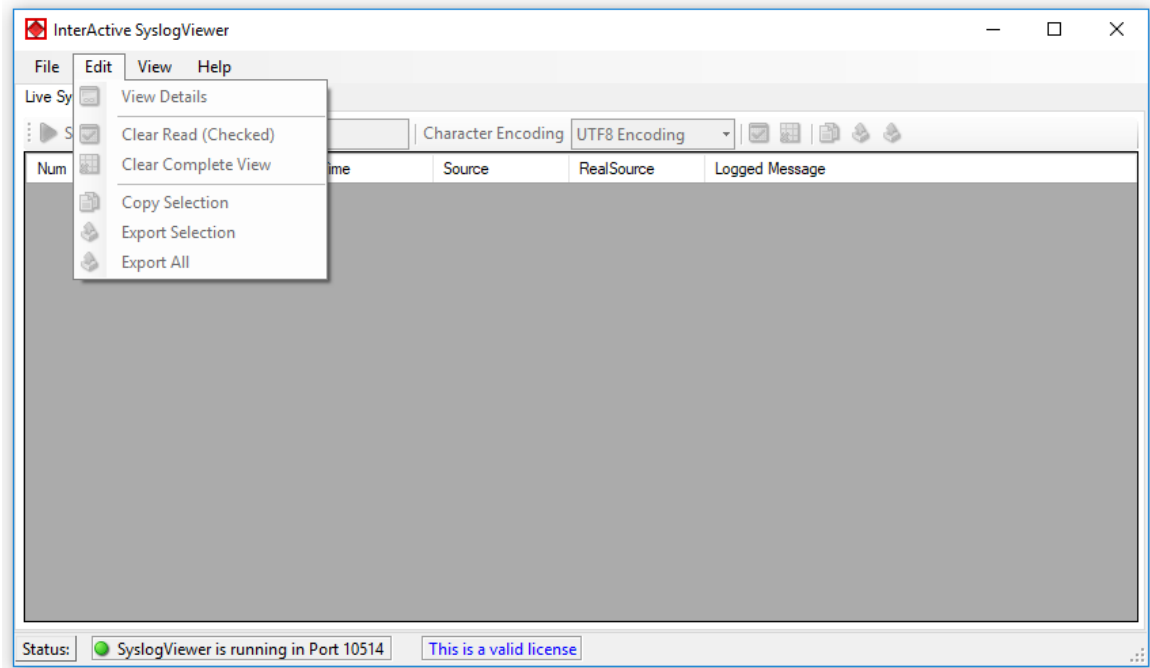
#### **Delete**



If a license is not needed anymore, you can delete it from the license screen. Mark the license and hit the button. The license will be deleted directly.

**Please note**, that the screen will give you additional information. You have an overview of the licenses used and if not entered correctly it will show how long your trial period still is.

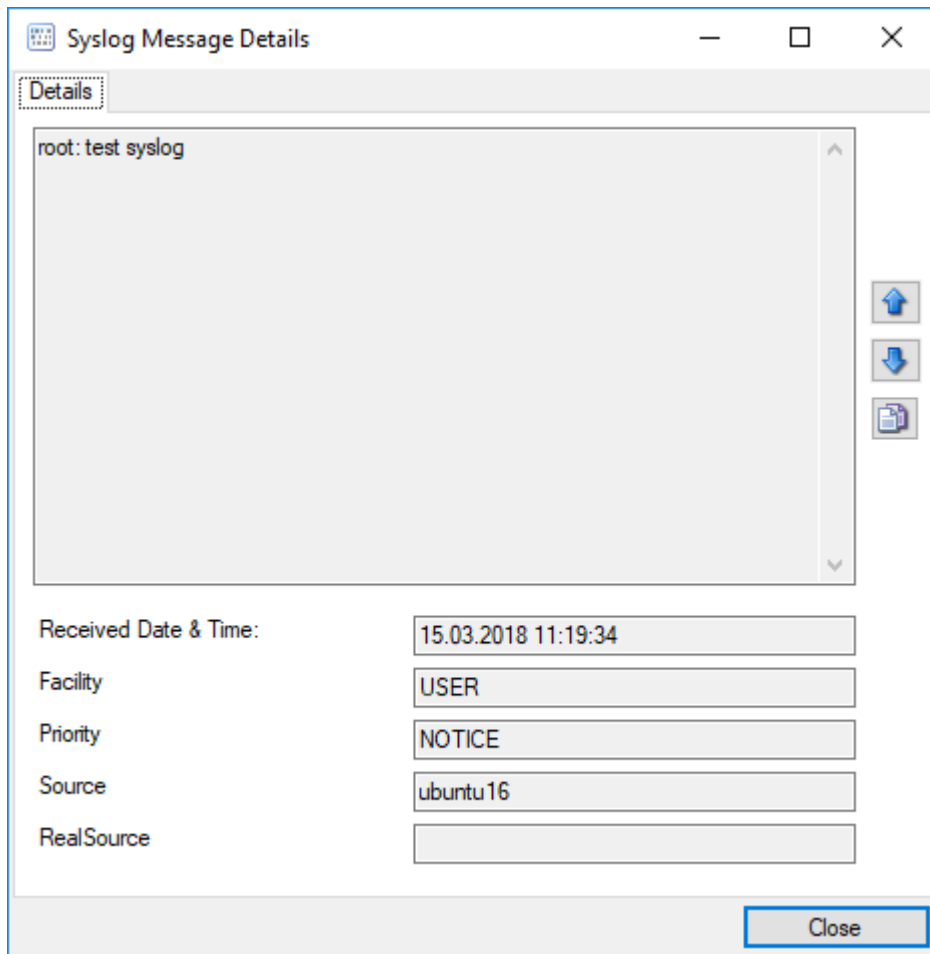
## 2.3.2 Edit Menu



*Edit Menu*

### View Details

When using this option, another window will open up, which shows the details of this event in a more readable view. This could look like this:



*Syslog Message Details*

### **Clear Read (Checked)**

By activating this, you can clear the checkboxes of the items you marked as read.

### **Clear Complete View**

This option will clear the screen and remove all received data from the view.

### **Copy Selection**

Having selected one or multiple entries, you can copy them using this function.

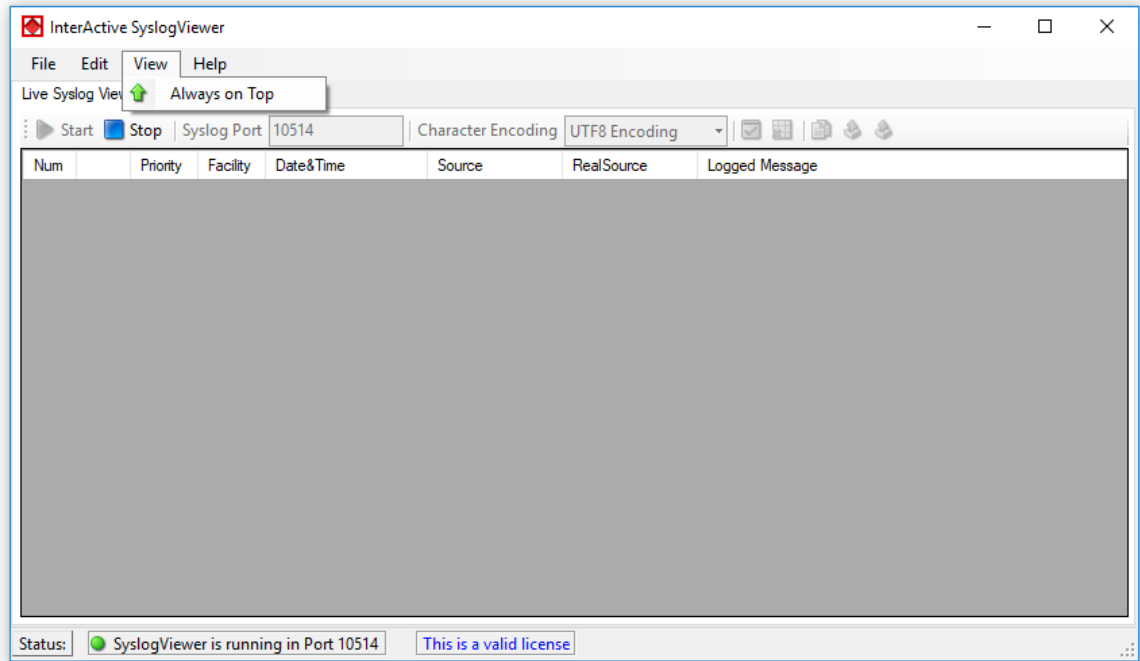
### **Export Selection**

Instead of copying you can extract the selected data into a text file.

## Export All

Or you directly export all the data that is currently in the list.

### 2.3.3 View Menu

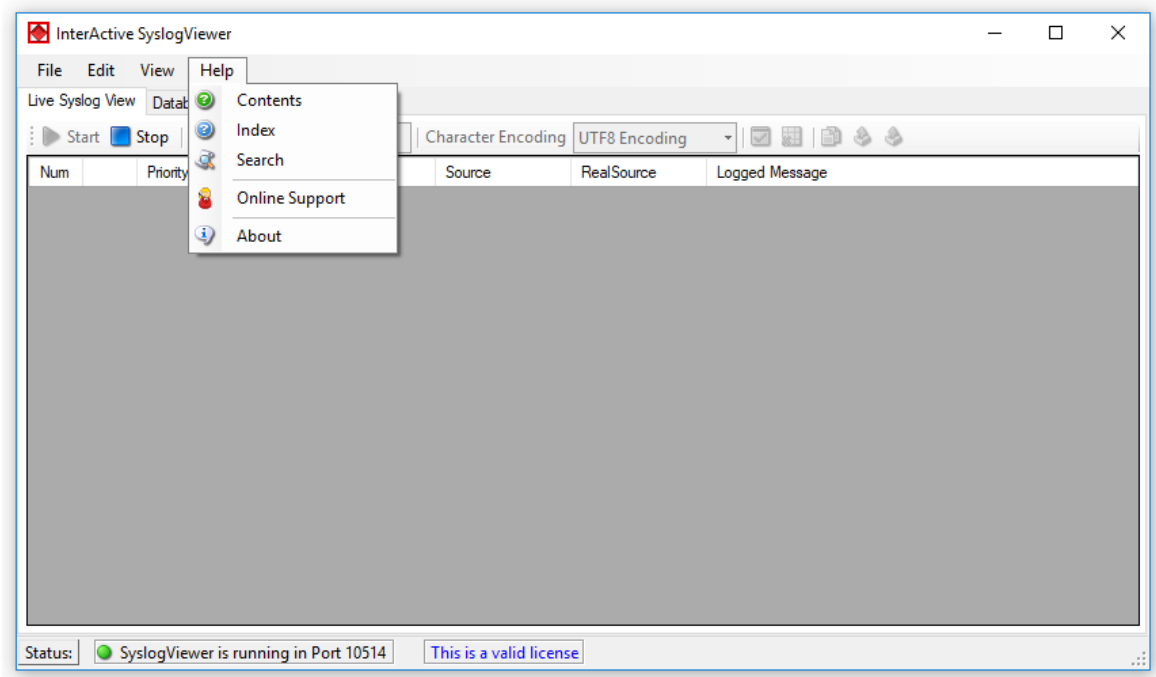


*View Menu*

#### Always on Top

This option is very self-explanatory. While activated, the InterActive SyslogViewer window will stay on top of all other applications, so you will have all incoming log data directly in your point of view.

## 2.3.4 Help Menu



### Help Menu

#### Contents

Show the manual.

#### Index

Show the manual index.

#### Search

Search the manual.

#### Online Support

By clicking here, a browser window will open and you will be directed to our support website.

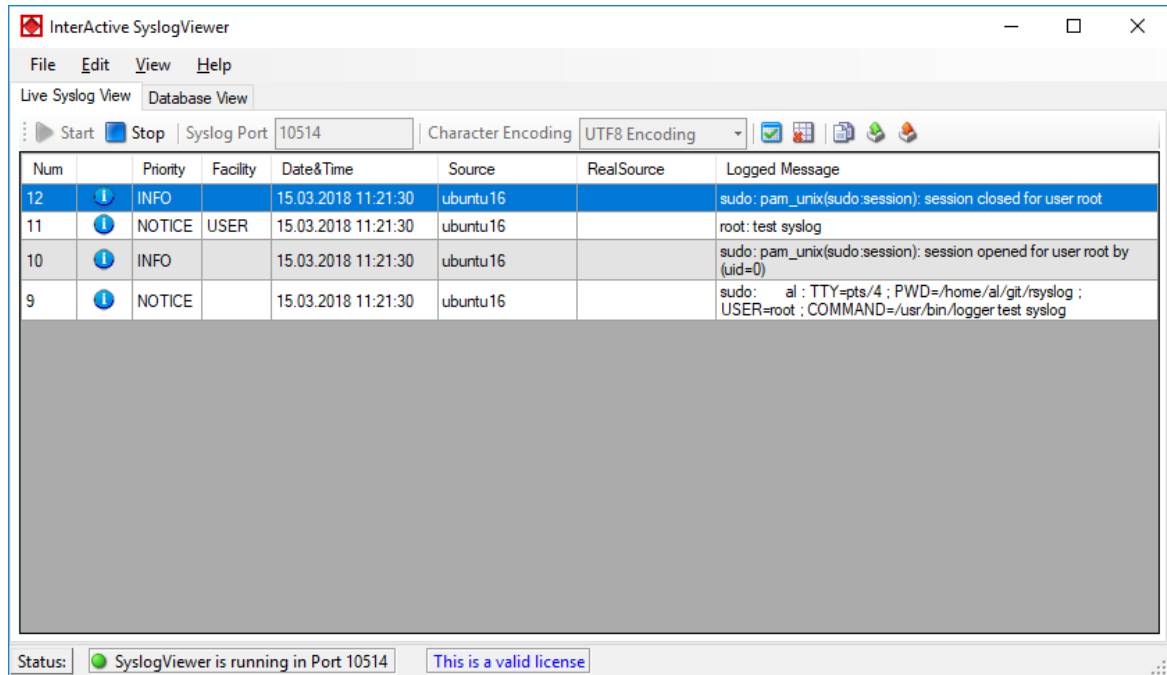
#### About

The About-window will give you additional information to the tool, like the program version.

## 2.4 Live Syslog View

Primarily, the InterActive SyslogViewer is used for viewing current syslog traffic. All messages are shown in a list with the most important information. These are the Priority, Facility, Date&Time, Source, RealSource and the Message. At the beginning of each line you can see the number of the logged event and a checkbox, for you to track if a message has been read.

The status bar at the bottom of the screen shows you, if the SyslogViewer is running or stopped and how much time you have left for the trial or your licensing status.



### Live Syslog View

The toolbar provides you with direct access to the most important functions. These are described here:

#### Start

With the start button, you start the receiving service. Now the InterActive SyslogViewer will receive and display all incoming messages. If messages were sent before starting the service, they will be dropped.

#### Stop

Here you can stop the receiving server.

#### Syslog Port

Here you can define the syslog port where the Viewer should be receiving the syskigness

### **Character Encoding**

Here you can define how characters will be decoded. You can choose from Default Encoding (depending on OS), Ascii, Unicode, UTF8 or UTF32.

### **Clear checked**

With this button, you can clear all the checkboxes in front of the messages.

### **Clear View**

By clicking on this button, all data will be deleted from you datagrid.

### **Copy Selection**

This helps you copying the selected messages.

### **Export Selection**

You can export the selected data directly by using this button.

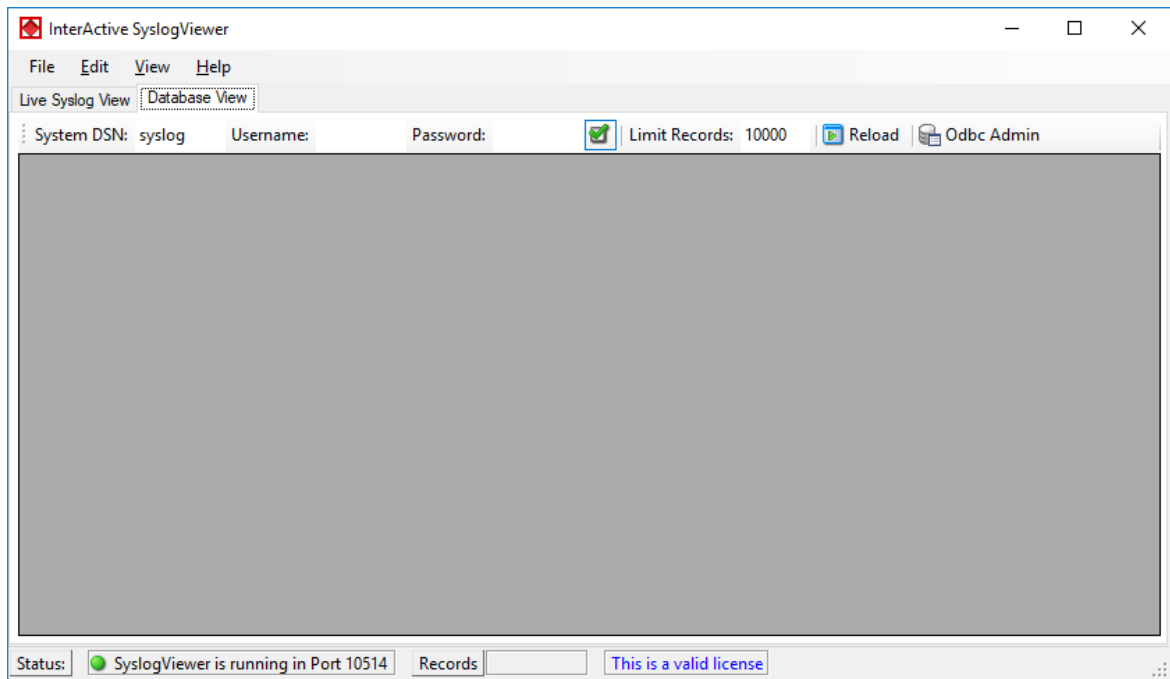
### **Export All**

Export the complete data that is in the data grid.

## **2.5 Database View**

Another feature is the possibility to review log messages which are stored in a database.

The status bar at the bottom of the screen shows you, if the SyslogViewer is running or stopped, how many records are currently shown and how much time you have left for the trial or your licensing status.



### *Database View*

The toolbar in this case is for entering the login information for the database.

#### **System DSN**

Specify the System DSN of your database here.

#### **Username**

The username for the database.

#### **Password**

The appropriate password for the database.

#### **Store Username and Password**

With the checkbox you can tell the InterActive SyslogViewer to keep the username and password or not. This is to make usage easier for you.

#### **Limit Records**

This limits the maximum of the shown records. The default value is 10000. If changed, this can have an enormous impact on your machine.

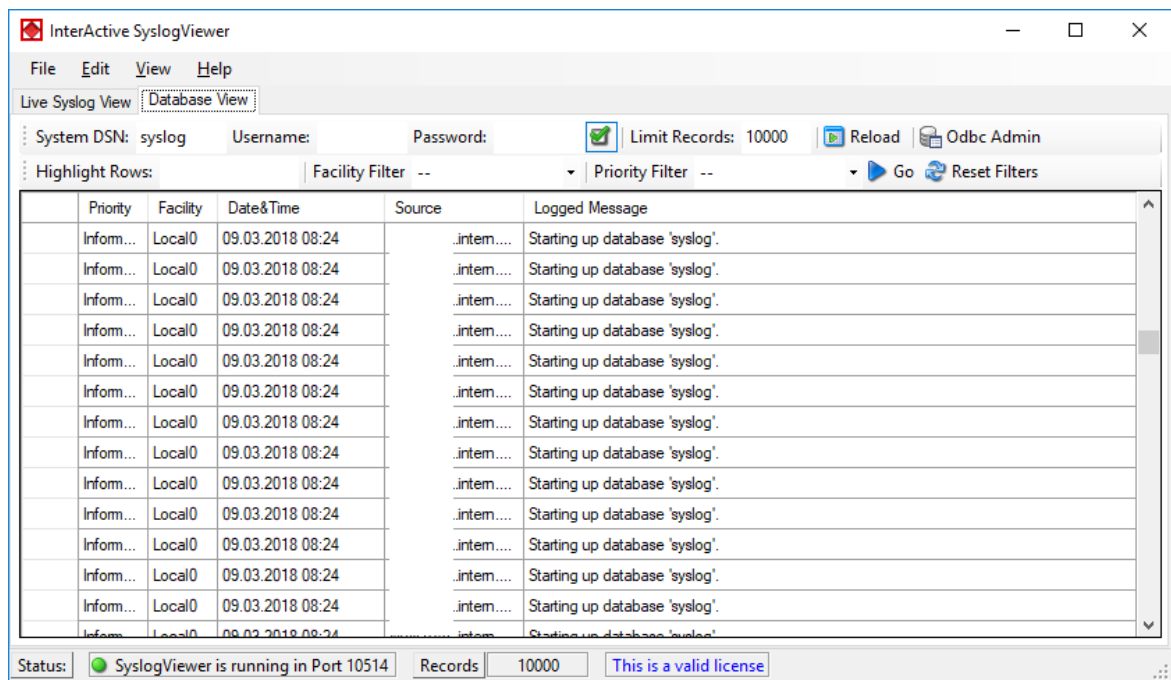
## Reload

This button is to reload the database. This is needed to view if there are new log messages in the database.

## Odbc Admin

This button opens the Administration Panel for ODBC Data Source connections

Once a database connection is successfully established, you can see another toolbar with the filter options:



*Active Database View*

## Highlight Rows

You can enter a keyword into the field, the rows containing this keyword will be highlighted. You can then find the messages much easier,

## Facility Filter

Allows you to only show messages with a certain facility. You can use the dropdown menu to specify the facility.

## Priority Filter



---

Allows you to only show messages with a certain priority. You can use the dropdown menu to specify the priority.

**Go**

With this button, you apply the filter settings to the current view. Depending on the filter settings you chose you will see either colored lines and/or only the lines from the category you wish to see.

**Reset Filters**

Resets the filter settings and returns you to the default view of your database.